



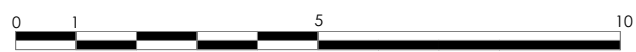
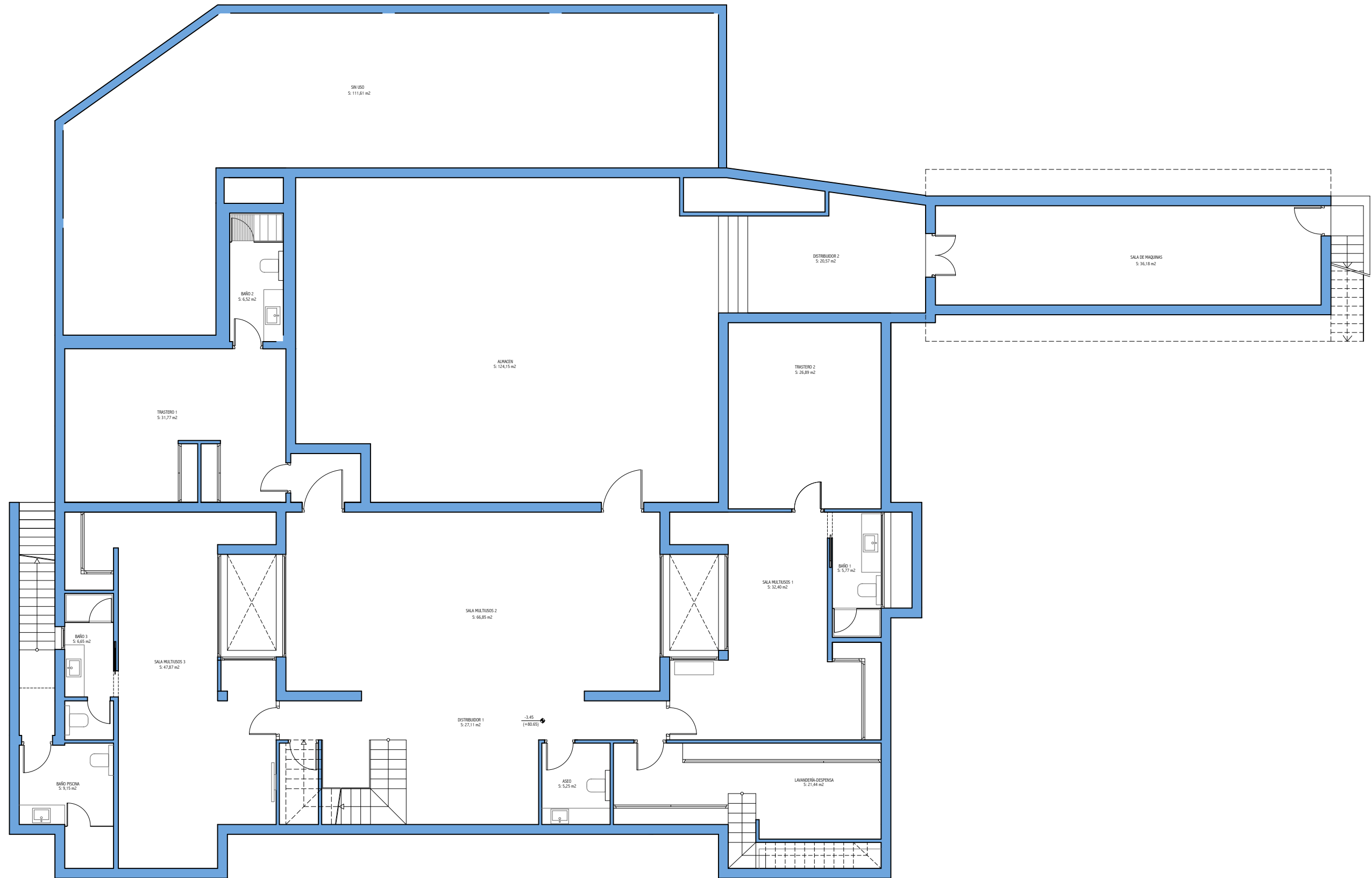


PARCELA 88. URB. LOS FLAMINGOS  
 BENAHAVIS - MALAGA  
**MAÍZ & DIAZ**  
 ARQUITECTOS

**PLANO EMPLAZAMIENTO**

1:250

SUP. PARCELA TOTAL	2108.54 m <sup>2</sup>
SUP. CONSTRUIDA VIVIENDA PLANTA SÓTANO	559.44 m <sup>2</sup>
SUP. CONSTRUIDA VIVIENDA PLANTA BAJA	261.61 m <sup>2</sup>
SUP. CONSTRUIDA VIVIENDA PLANTA ALTA	181.43 m <sup>2</sup>
SUP. CONSTRUIDA TOTAL TERRAZA DESCUBIERTA	279.56 m <sup>2</sup>
SUP. CONSTRUIDA TOTAL TERRAZA PERGOLA	120.15 m <sup>2</sup>
SUP. CONSTRUIDA TOTAL TERRAZA CUBIERTA	21.70 m <sup>2</sup>
SUP. CONSTRUIDA PISCINA	94.00 m <sup>2</sup>
SUP. CONSTRUIDA TOTAL	1517.89 m <sup>2</sup>
SUP. JARDÍN	610.48 m <sup>2</sup>
SUP. SOLERA DE ACCESO A VIVIENDA	429.77 m <sup>2</sup>



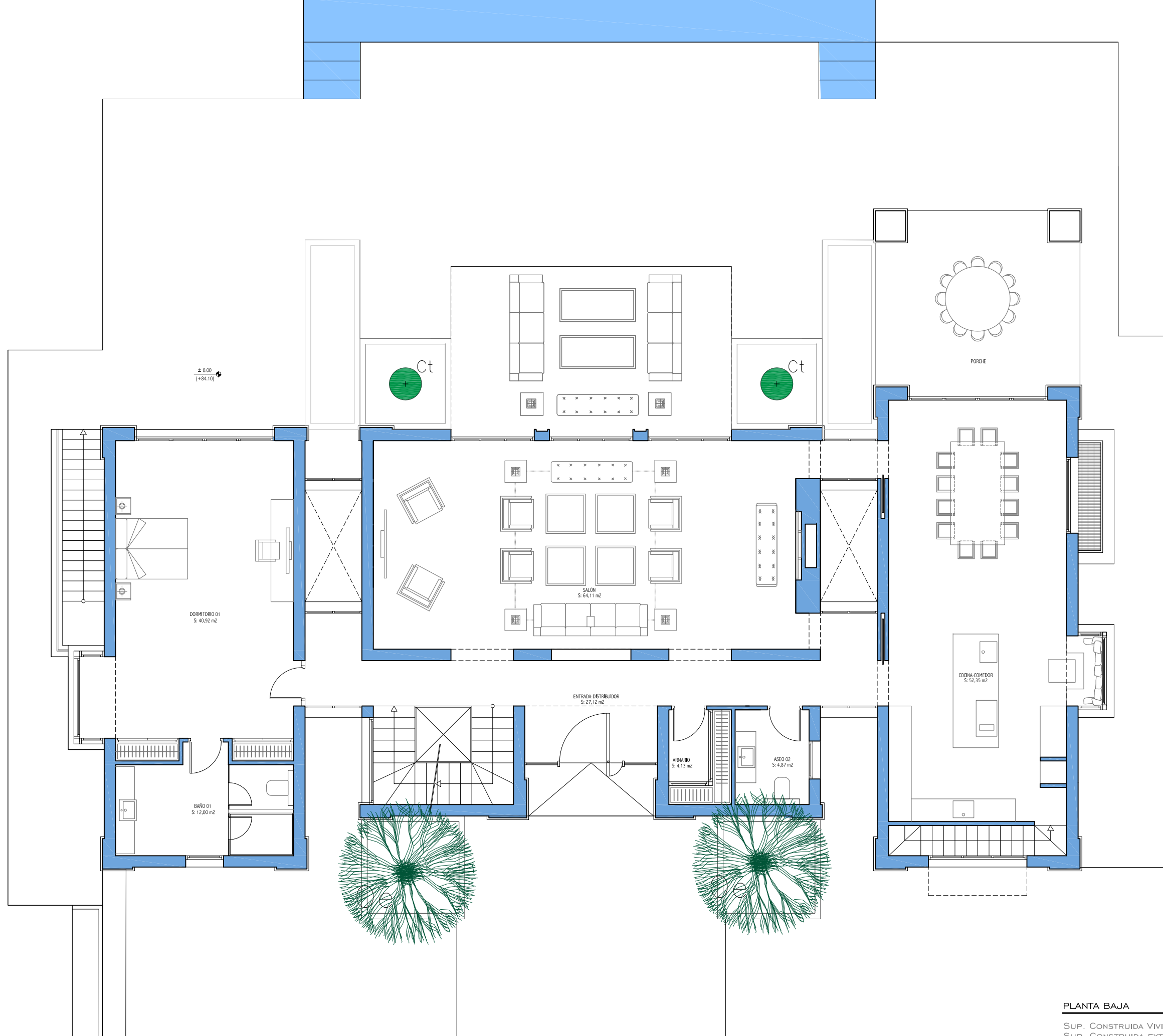
PARCELA 88. URB. LOS FLAMINGOS  
 BENAHAIVIS - MALAGA  
**MAIZ & DIAZ**  
 ARQUITECTOS

PLANTA SOTANO

1 : 125

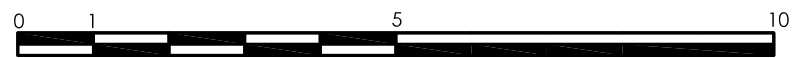
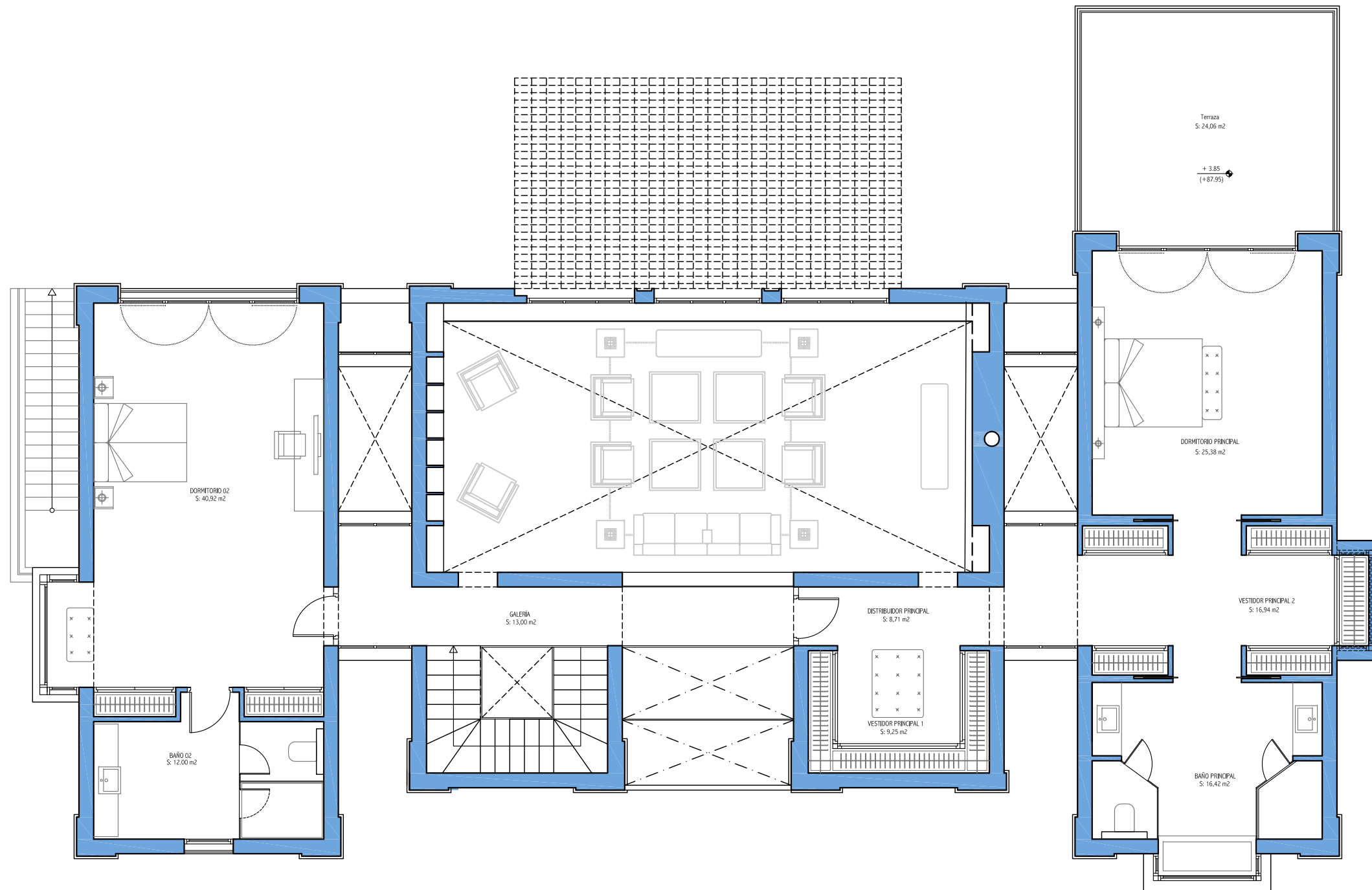
SUP. CONSTRUIDA VIVIENDA	559.44 M <sup>2</sup>
SUP. CONSTRUIDA COLINDANTE AL SOTANO	119.94 M <sup>2</sup>
<b>SUP. CONSTRUIDA TOTAL</b>	<b>679.38 M<sup>2</sup></b>





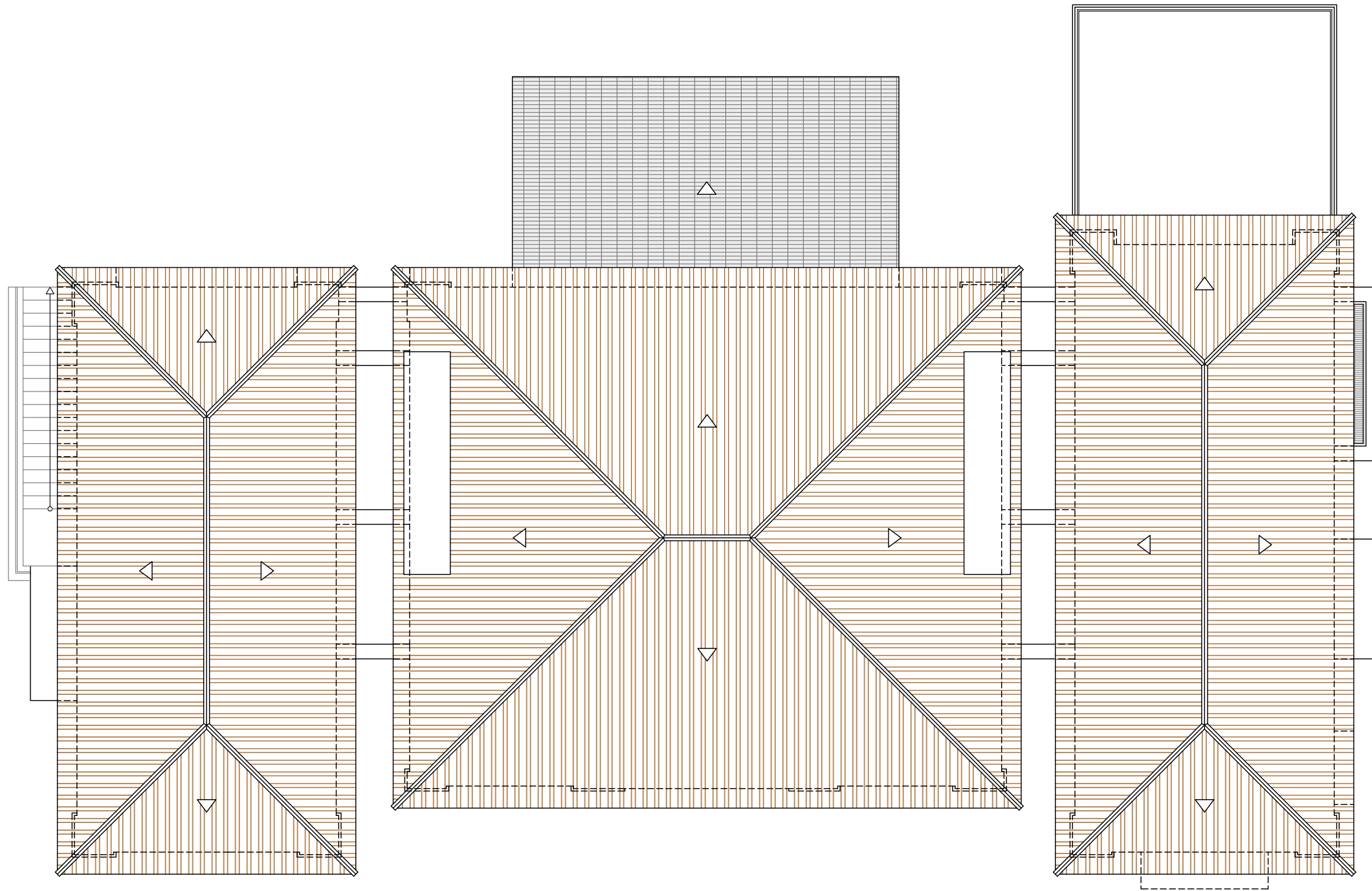
PARCELA 88. URB. LOS FLAMINGOS  
 BENAHAUIS - MALAGA  
**MAIZ & DIAZ**  
 ARQUITECTOS

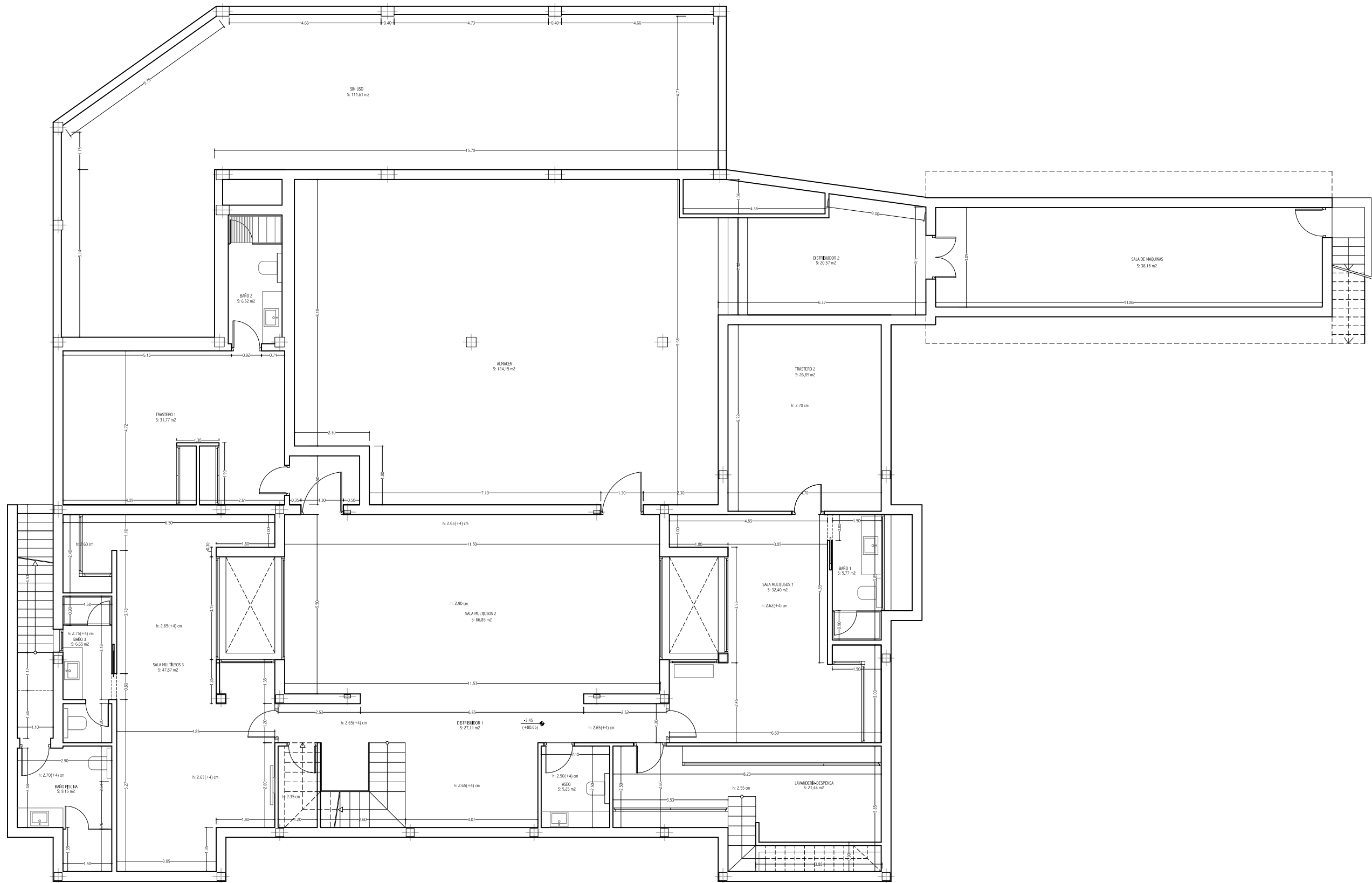
PLANTA BAJA		1:100
SUP. CONSTRUIDA VIVIENDA	261.61 M <sup>2</sup>	
SUP. CONSTRUIDA EXTERIOR (TERRAZA PERGOLA)	33.94 M <sup>2</sup>	
SUP. CONSTRUIDA EXTERIOR (TERRAZA CUBIERTA)	26.46 M <sup>2</sup>	
SUP. CONSTRUIDA EXTERIOR (TERRAZA DESCUBIERTA)	229.55 M <sup>2</sup>	
<b>SUP. CONSTRUIDA TOTAL</b>	<b>551.56 M<sup>2</sup></b>	
SUP. JARDIN	610.48 M <sup>2</sup>	

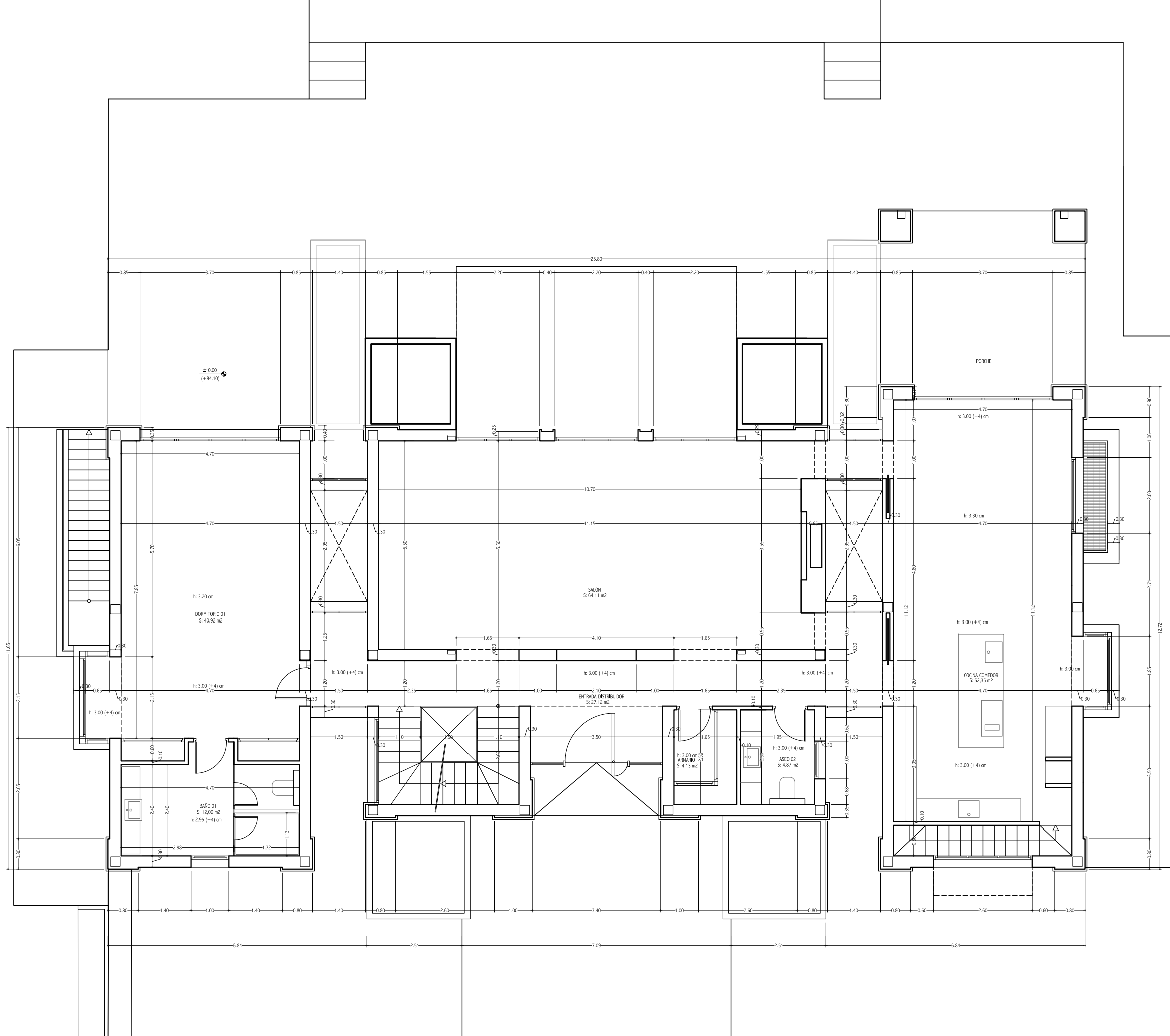


PARCELA 88. URB. LOS FLAMINGOS  
 BENAHAVIS - MÁLAGA  
**MAIZ & DIAZ**  
 ARQUITECTOS

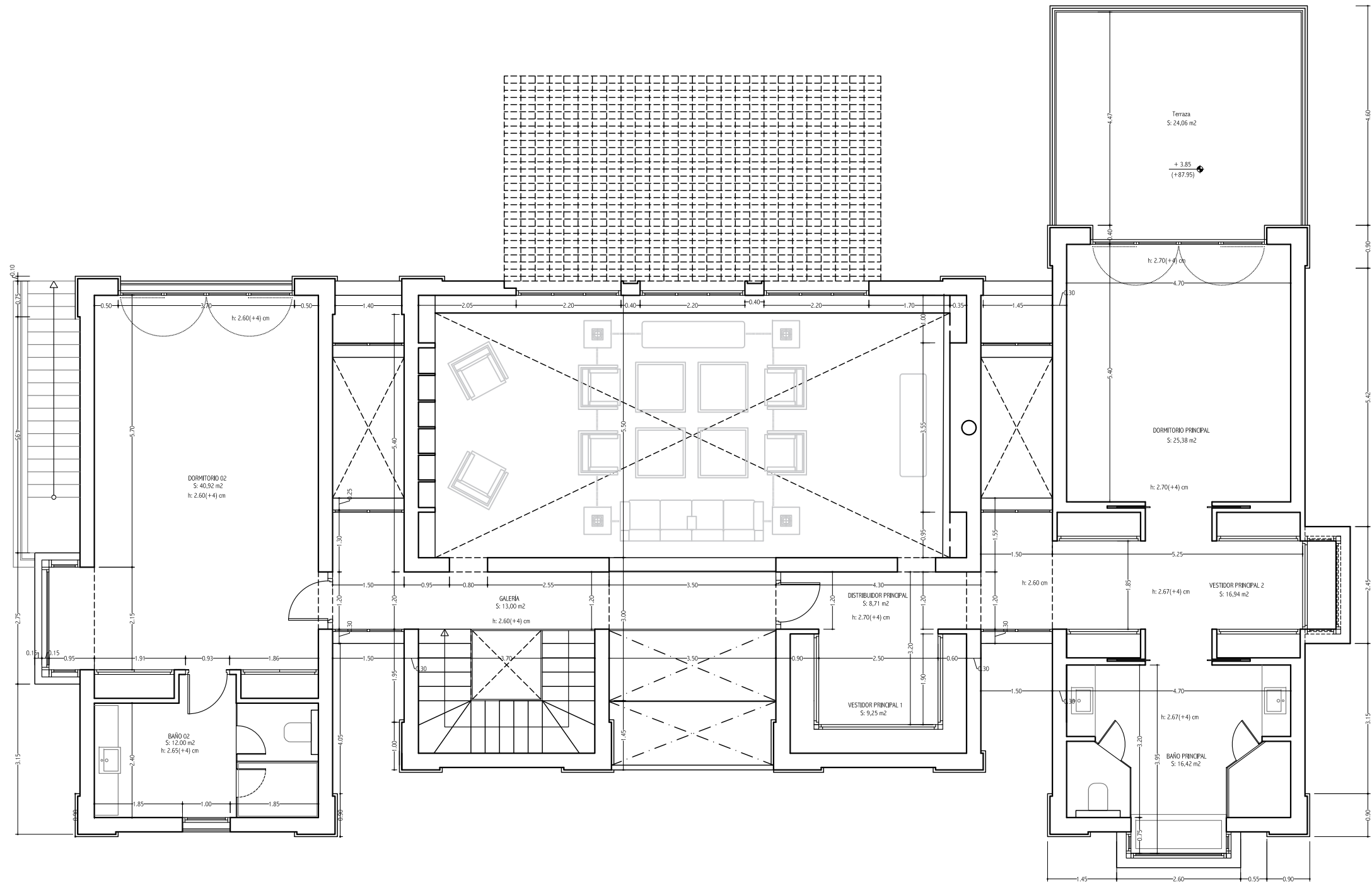
PLANTA ALTA	1 : 100
SUP. CONSTRUIDA VIVIENDA	181,43 m <sup>2</sup>
SUP. CONSTRUIDA EXTERIOR (TERRAZA DESCUBIERTA)	24,06 m <sup>2</sup>
SUP. CONSTRUIDA TOTAL	205,49 m <sup>2</sup>

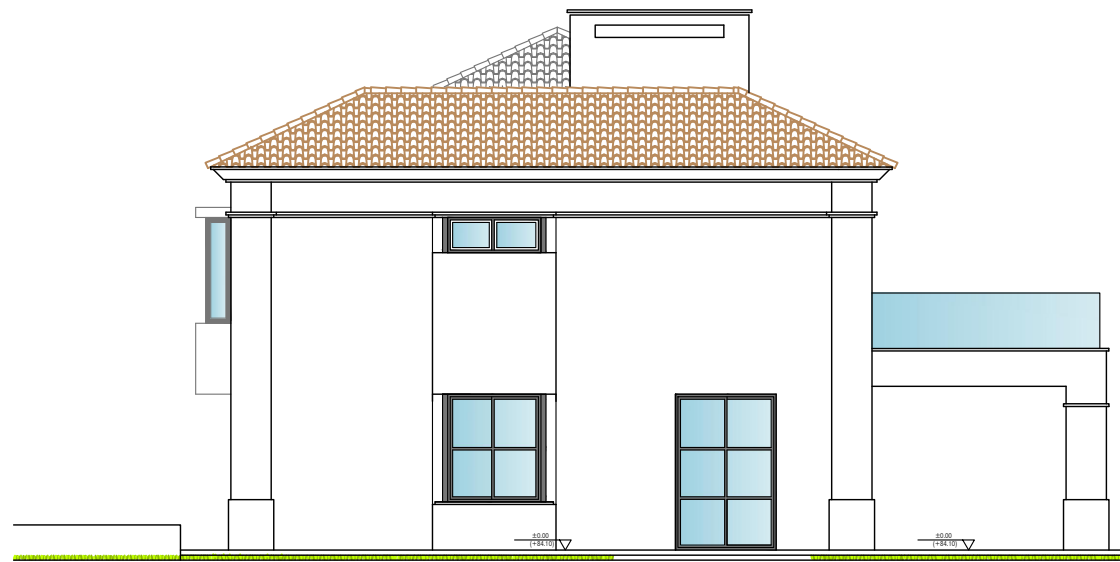




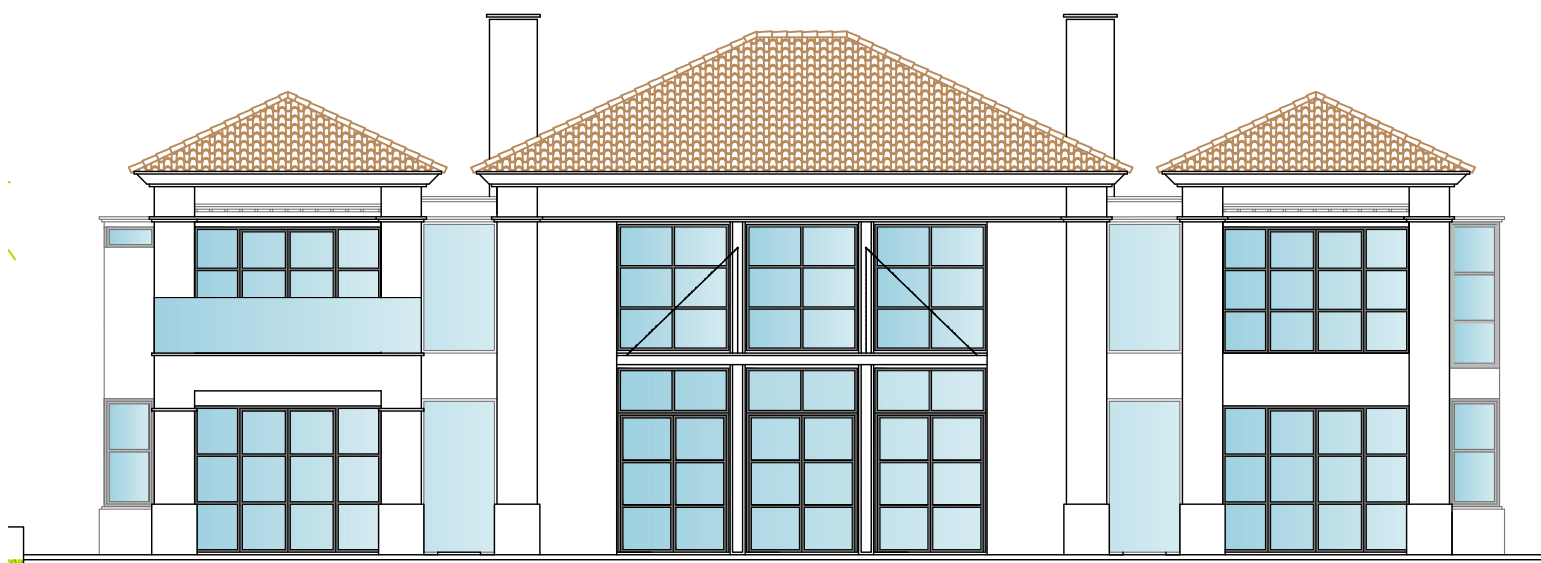
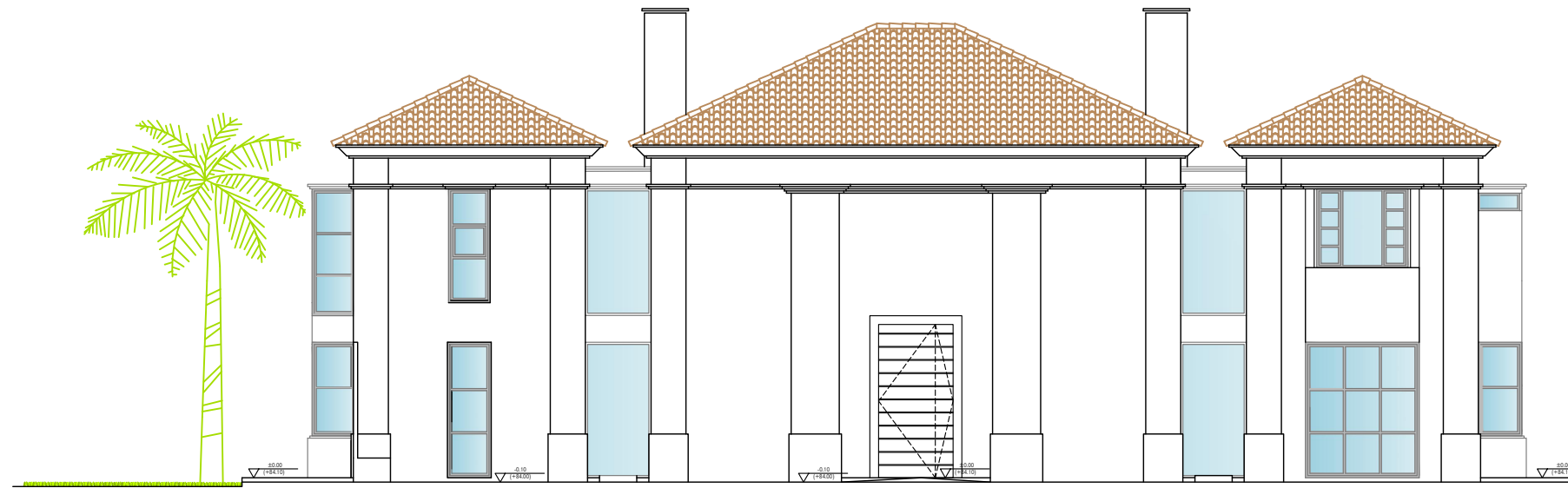








ALZADO D-D'



ALZADO B-B,



ALZADO C-C'

